



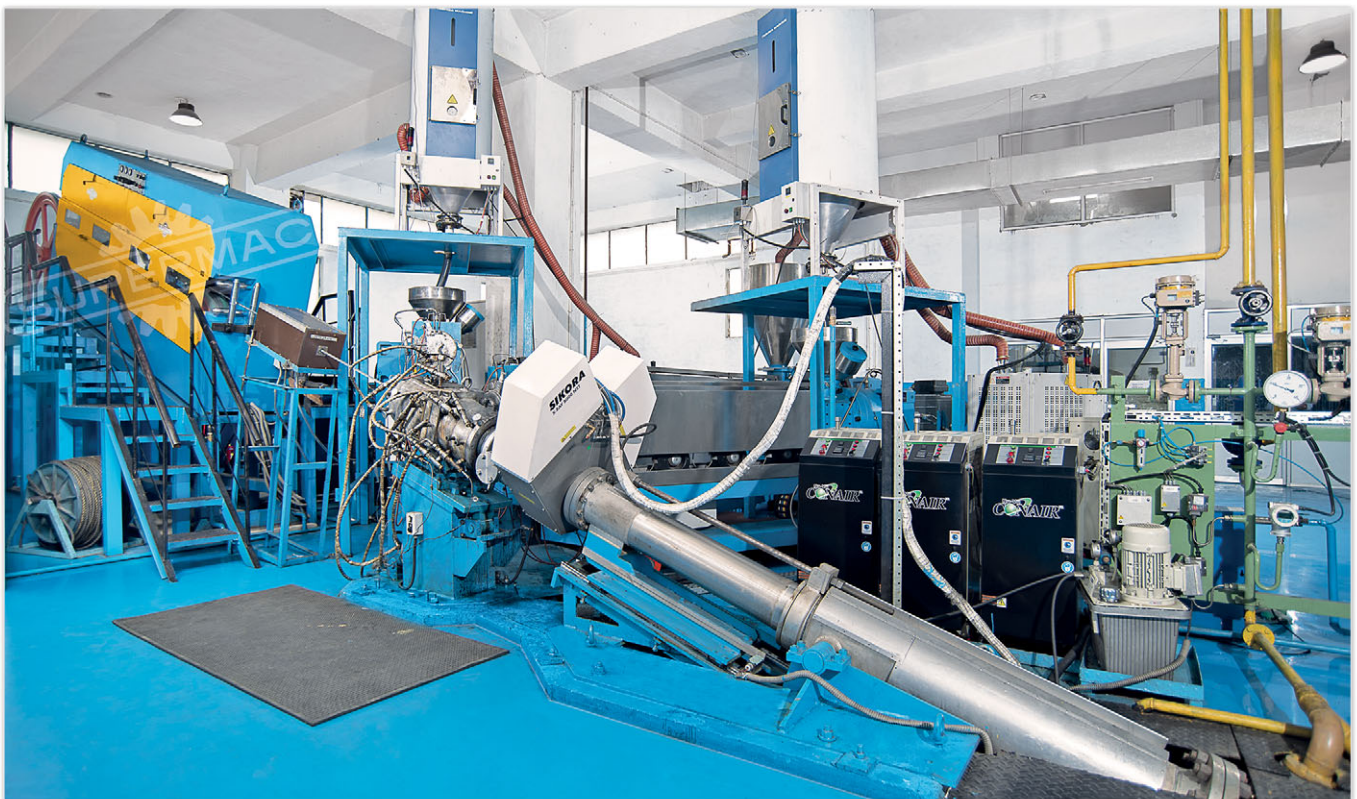
DRY CURE CCV LINES FOR MEDIUM / HIGH VOLTAGE CABLES

WORLD CLASS EXTRUSION SYSTEMS

Supermac CCV line is a result of multiple decades of dedication in cable Extrusion Industry. The incorporation of high torque motor and drives that provide Customer with wide range of torque required to extrude various products, since the system is compact therefore it is easy to couple the system directly on the machines & eliminates the requirement of various speed changing Gear Box.

Supermac CCV line are meant to run long continuous production schedules taking care of frictional heat and pressure and delivers uniform production.

The line is equipped with driven Pay off & Accumulator, so that the changes over of Bobbin are done without stopping the line.



KEY FEATURES:

- Fast tool changing
- CV Tube from Germany
- SAG control from Germany
- All machines are fully Guarded
- Online Diameter controlling for all 3 layers
- Dry Nitrogen cure & Nitrogen Cool System
- Dry Nitrogen cure & Water Cool System
- Compatible with Industry 4.0 norms & IOT Enabled
- On line remote service facility to handle PLC and electronics problems.
- In-house manufacturing that ensures excellent service and quality.
- Electro mechanical switches are given for operator safety during running

The option of entry caterpillar also available on customer choice.

The entry Capstan runs in synchronization so that the cable is controlled optimally & line runs without any jerk.

The online X-Ray device checks and displays the concentricity & thickness of all three layers to operator on the screen during the running of the line.

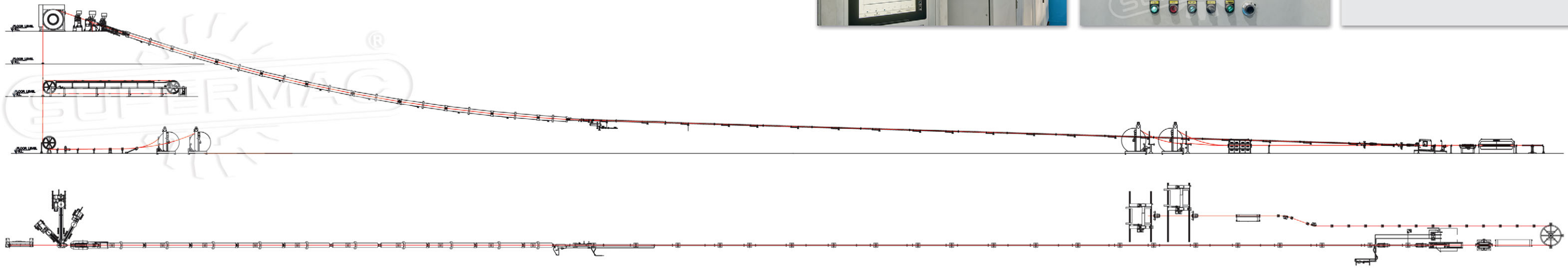
The curing of cable is done through nitrogen gas in the catenary tube on line. Once the heating part of curing is done, and then starts the cooling of cable with in the tube. The cable comes out cooled & cured out of end seal portion of the curing tube.

The cooling could be dry cool or wet cool system based on customer choice.

The exit Caterpillar is provided with enough pulling force to handle the cable tension to maintain the catenary sag in the tube.

Supermac offers a new online service support system to Customer where in the PLC software & program can be handled from Supermac own site, giving customer fast support in hour of need.

The Triple Extrusion Cross Head is a state of art product of supermac product profile; it incorporates the melt distributors of different profile, shape & depth for all three layers. The system is oil/water heated from inside, which uniformly heats all the zone of Cross Head.



SUPERMAC UPTO 66 KV LINE SPECIFICATIONS

CABLES	MV CABLES
VOLTAGE RANGE	UP TO 66 KV
CONDUCTORS	1000MM ² CU
MAXIMUM CABLE DIAMETER	65MM
MAXIMUM CABLE WEIGHT	15KG. /METER
TRIPLE CROSS HEAD	40 / 70
WALL THICKNESS	
INNER SEMI CONDUCTOR	0.4-2.0MM
INSULATION	2.2 TO 12MM
OUTER SEMI CONDUCTOR	0.4-2.0MM
LINE EXECUTION	
LENGTH OF THE LINE	190 METER
CV TUBE	
LINE SPEED	3-30 METER/MINUTE
EXTRUDER GROUP	
75MM	INNER SEMI CON
175MM	INSULATION
90MM	OUTER SEMI CON

SUPERMAC INDUSTRIES (INDIA) LIMITED

AN ISO 9001-2015 

REGISTERED OFFICE :

A-29, Naraina Industrial Area
Phase-1, New Delhi-110 028, INDIA
Tel.: +91-11-45574317
E-mail: office@supermacindia.com

UNIT-I :

A-28, Naraina Industrial Area
Phase-1, New Delhi-110 028, INDIA
Tel.: +91-11-45574317
E-mail: office@supermacindia.com

UNIT-II :

Plot No. 2, Sector-6, IMT Manesar
Gurgaon, Haryana, INDIA
Tel: +91-124-4690500
E-mail: jasvinder@supermacindia.com

UNIT-III :

Plot No.18-19, Sector-2A, IMT Manesar,
Gurgaon 122050 Haryana, INDIA
Tel : +91-124-4690500
E-mail: jasvinder@supermacindia.com